

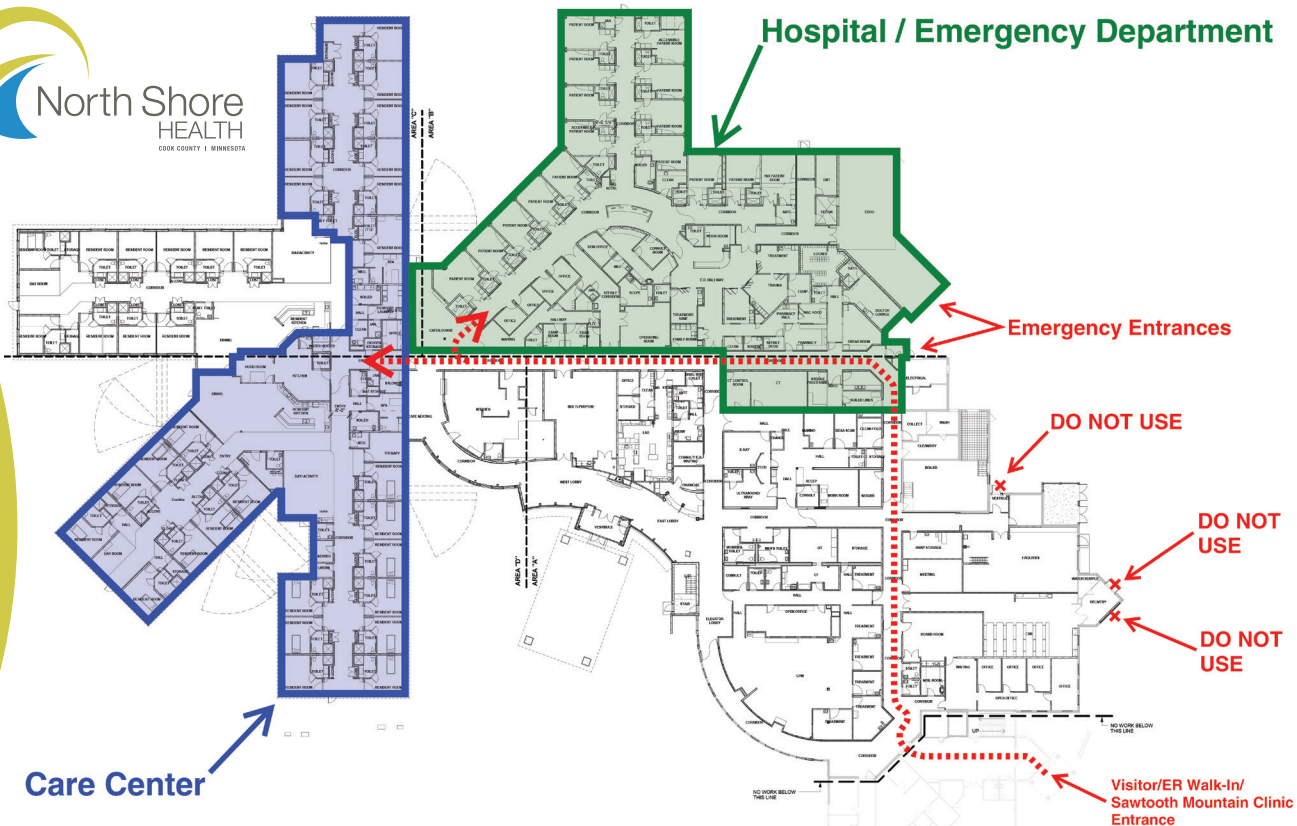
# ENTRANCE CHANGE



Effective Immediately, North Shore Health's Emergency entrance has relocated. Please access the Emergency Department in one of the following ways:

- » By entering through the new garage door under the Emergency sign for the emergency drive-through bay
- » By entering through the walk-in door immediately to the left of the new emergency garage door
- » By entering through the Clinic atrium entrance from 7:00 a.m. to 8:30 p.m.

Directions Signs will be posted to help you find your way.



For further information on entrance changes and to follow our construction progress, please visit our website at [www.northshorehealthgm.org](http://www.northshorehealthgm.org) or on the construction blogsite at [www.nshorehospitalconstruction.com](http://www.nshorehospitalconstruction.com). Information will also be available on Boreal and WTIP.